

# VICTORIA UNIVERSITY WEB DATABASE

FALL / SUMMER 2012

VISUAL AND STATISTICAL NETWORK AND WEB DATABASE  
OF CLASSROOM INFRASTRUCTURE  
BURL CRONE with DEEPIKA TAYL (Database) and  
JAMIE LEKAS (Data collection)

BUILDING / ROOM INDEX

<http://www.osm.utoronto.ca/classcomp/>

Extending the Univ of Toronto Classroom Classroom Component Survey (also made by use) to Victoris University.

Data and pictorial database designed to cross index all the room compoents in a live web database (for showing current status) combined with a live data generator (to generate reports for current and future planing)

31 rooms in 6 buildings

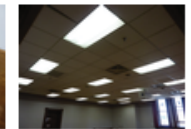
Seating



Tables



Lighting



Seat Type **Loose Tablet**  
 Manufacturer -  
 Size (width X depth) -  
 Installation Date -  
 Grade Level **Grade D**  
 Warranty -  
 Condition -  
 Features -

Notes  
 117 chairs with d  
 30 bench seats v  
 147 seats total

Last Updated **25-JUL-2011 12**

COMPONENT GRADE &  
DESCRIPTION

<http://www.osm.utoronto.ca>

<http://www.osm.utoronto.ca/classcomp/>

LOGIN WITH PASSWORD FROM

[http://rrs.osm.utoronto.ca/class\\_comp\\_admin](http://rrs.osm.utoronto.ca/class_comp_admin)

The whole purpose of this project is a live, evolving database so the financial 'report' is not a static report but a live tool.

Through the use of live database and web access becomes itself a active aspect of the classroom infrastructure.

Projects guarantee improvement today; the component index provisions for continued improvement over the long term - Everygreening.

## GRADING KEY



Components are graded (A B C D E) according to the colour scale at the top right. The component grading is done by an intern on an annual or bi-annual summer basis & updated by OSM during regular visits & upgrades.

Grade	Description
<b>A</b> CURRENT SPEC	<b>Components identical to what we would currently buy</b> example - KI Perry or Torsion-on-go for loose seating, Trek tables, Concerto theatre seating, 10 year-warranty carpet tiles in a patterned neutral colour
<b>B</b> MEETS STANDARD	<b>Components meet all of our current design / function standards, but are not the current specification</b> example - KI Matrix seat and portico table; well-designed, functional, durable.
<b>C</b> FUNCTIONAL, NOT TO STANDARD	<b>Components perform basic classroom functions but do not meet all current standards</b> example - Tables and seating with minimum comfort or 2nd-tier durability, fixed seating with small tablet
<b>D</b> REDUCED FUNCTION, NOT TO STANDARD	<b>Components do not provide the necessary classroom functions and do not meet the standard</b> example - Poorly designed components requiring regular maintenance, fixed seating without tablets, components unsuitable for classroom use
<b>E</b> PRIORITY FOR REPLACEMENT	<b>Components fail to serve day-to-day classroom functions</b> example - Wobbling tables, poorly constructed seating, fixed seating with shells at end of service life; components requiring maintenance to the point of being unreliable on a day-to-day basis

Home	Analysis for OSM	Analysis for Victoria College
------	------------------	-------------------------------

Analysis By

Seat  Floor  Writing  Overall

Grade	Seating Type	Description	Unit Price	# of Seats	# of Rooms	Total value
<b>Grade A</b>	<a href="#">show detail</a>	Loose Stacking	\$150.00	47	2	\$7,050
	<a href="#">show detail</a>	Loose Tablet Arm	\$350.00	112	2	\$39,200
<b>Grade Total:</b>				<b>159</b>	<b>4</b>	<b>\$46,250</b>
<b>Grade B</b>	<a href="#">show detail</a>	Loose Stacking	\$150.00	181	2	\$27,150
<b>Grade Total:</b>				<b>181</b>	<b>2</b>	<b>\$27,150</b>
<b>Grade C</b>	<a href="#">show detail</a>	Loose Tablet Arm	\$350.00	419	7	\$146,650
	<a href="#">show detail</a>	Fixed Tablet Arm	\$400.00	972	3	\$388,800
	<a href="#">show detail</a>	Loose Stacking	\$150.00	246	10	\$36,900

Home	Analysis for OSM	Analysis for Victoria College
------	------------------	-------------------------------

Analysis By

Seat  Floor  Writing  Overall

Overall Analysis

Grade ▲	Seating Cost	Floor Cost	Tables Cost	Total
Grade A	\$46,250.00	\$53,645.50	\$48,825.00	\$148,720.50
Grade B	\$27,150.00	\$56,962.00	\$26,950.00	\$111,062.00
Grade C	\$572,350.00	\$32,554.00	\$29,050.00	\$633,954.00
Grade D	\$132,700.00	-	-	\$132,700.00

GRADING KEY

GRADE and VALUE by component

GRADE and VALUE of all components together